

# Battery Repair & Maintenance



**Boost Productivity & Extend Battery Life  
with Expert Repairs & Maintenance**



## Battery & Charger Repair

Restore your batteries to peak performance and save on replacement costs.



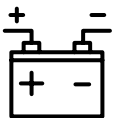
## Battery Planned Maintenance

Regular maintenance to prevent downtime and enhance reliability.



## Battery Watering

Ensure optimal battery performance with precise watering services.



## Battery Replacements

Need new batteries? Seamless replacements to keep your fleet moving.



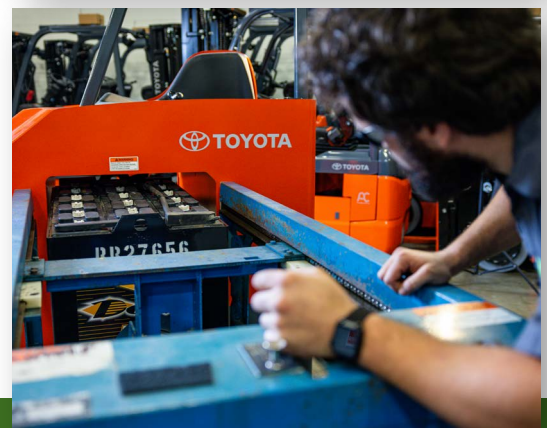
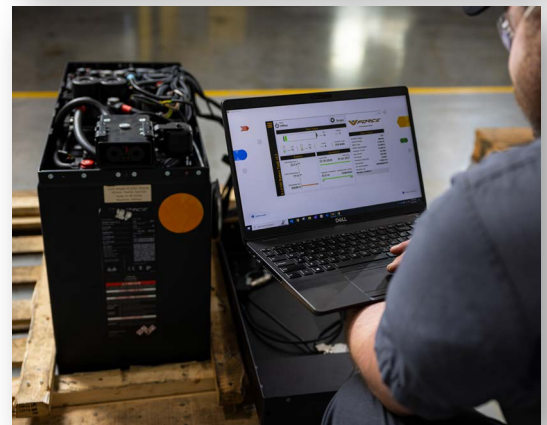
## Battery & Charger Rentals

Flexible rental options to meet your temporary battery and charger needs.



## Battery Reconditioning

Efficient troubleshooting and repairs to maximize battery lifespan and renewed performance.



**Power Up Your Operations Today!**

Contact us to schedule a service or learn more about our complete battery solutions.

**(877) 659-8907 | [www.liftincorporated.com](http://www.liftincorporated.com)**



# BATTERY RECONDITIONING

# Having Runtime Issues?

Get Your Batteries Back To

# 80%+

of Manufacturers Rating



**Speak to One of Our Experts  
About Possibly Extending Your  
Batteries Life Another Year or  
Two Before Spending Big on  
New Batteries**

## Why Recondition Your Battery?



**Cost Savings:** Extending the life of a battery can save significant replacement costs.



**Enhanced Performance:** A reconditioned battery can provide better efficiency and reliability.



**Environmental Benefits:** Reconditioning reduces waste and the need for new battery production

**Signs Your Battery Needs Reconditioning:**  
Overheating, Performance Drops, Sulfur Smell,  
Visible Corrosion, or Smoke During Use or Charging



## How it Works?

3 Simple Steps

### 1. 12 Point Field Inspection

An initial detailed on-site inspection is performed to determine if the battery is potentially eligible for reconditioning by a trained battery technician.

### 2. Comprehensive Battery Evaluation

The battery is transported to our dedicated battery service center and load tested to confirm its eligibility.

### 3. Reconditioning

The battery is reconditioned and tested before returning to your fleet. You're also provided with a detailed report and warranty.

\* Results may vary. Performance will be based on application and usage.